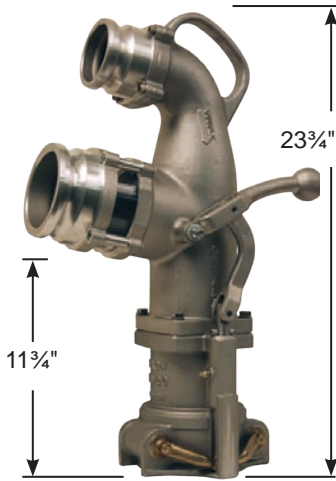


Coaxial Drop Elbow



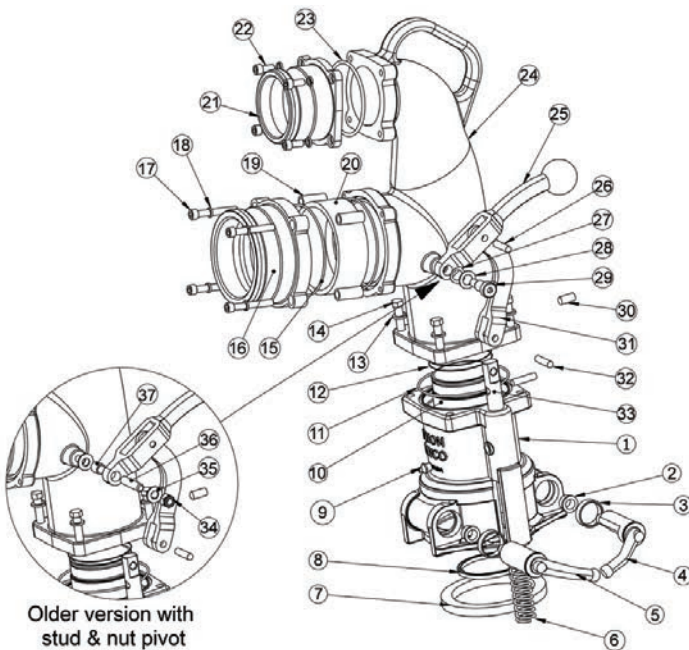
Features:

- for single point vapor recovery only
- 3" male vapor outlet (top)
- comes assembled with 4" male inlet
- quality cast aluminum construction with solid bronze arms
- bolt-on inlets/outlets for easy, fast replacement
- acrylic sight glass with buna seals
- replacement parts are available, please contact Dixon™
- 6400 co-axial inlets do not fit our other elbow series

Inlet	Outlet	Part #	Aluminum	Price/E
4" male	3" male vapor	6400		\$1363.95

6400 Series Coaxial Drop Elbows

Repair Kits



Part #	Description	Includes Item #	Price/E
6230	complete standard	1-7, 9, 11, 32, 33A	\$442.85
6230X	replacement bottom unit	1-7, 9, 11, 32, 33B	520.05
6400ARK	complete tall replacement bottom unit	2-5, 7, 8, 11, 12	186.80
6200BK	replacement L & R arms, main gasket, O-rings, small & large bushings	2, 3	44.10
6400SGK	replacement small & large bushings	15, 20	50.60
6200-15ASSM	replacement sight glass and seal	25, 26, 31	58.00
6000EHK	replacement handle, lever and pin	13, 14	9.10
6400-DTK	replacement bolts and washers	8, 10, 12	114.35
6200SHK	replacement tube, O-ring & U cup seal	34-37	16.95
6200SBK	replacement pivot stud, bushing, washer and lock nut	27-29	5.30
	replacement shoulder bolt pivot, wave washer and flat washer		

Coaxial Drop Elbow Replacement Fuel Inlets

S



Features:

- for use with 6400 series coaxial elbows only
- rated for petroleum service, Ethanol to E100 and biodiesel to B20

Description	Part #	Aluminum	Price/E
3" adapter fuel inlet	6000-16C		\$99.90
4" adapter fuel inlet	6000-17C		99.90
3" coupler fuel inlet	6000-15C		183.15
4" coupler fuel inlet	6000-14C		183.15