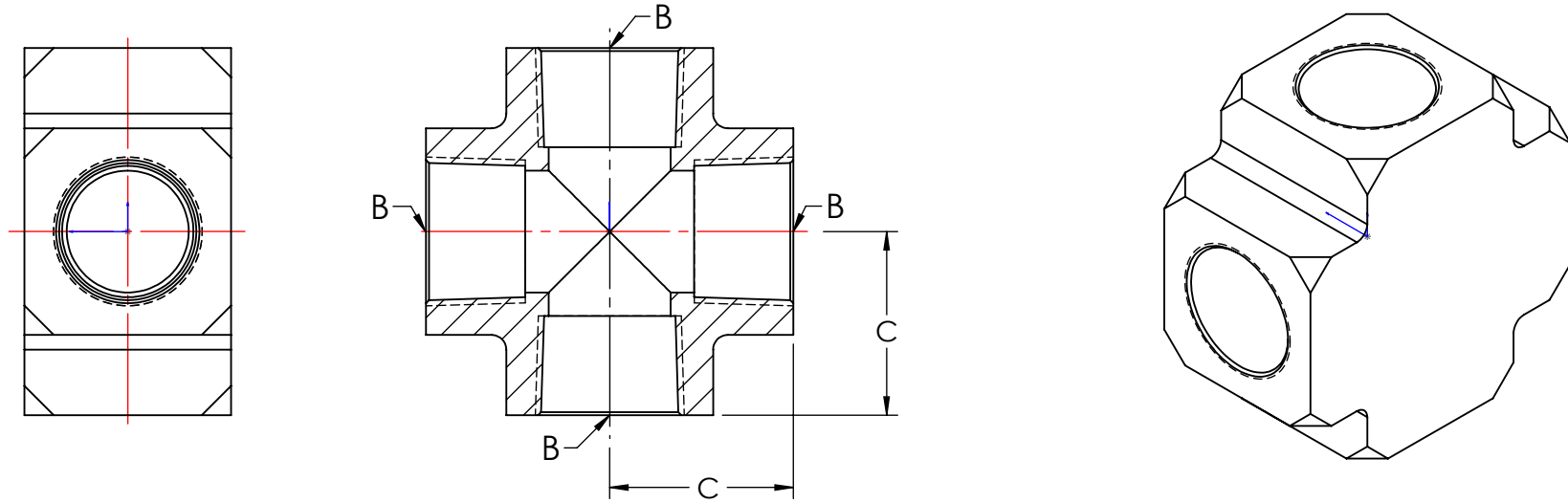


LINE DRAWING, NOT FOR PRODUCTION PURPOSES

REV	COMMENT	DATE
A	TO SOLIDWORKS	6/10/20



PART NUMBER	B (NPTF THREAD)	C (C/L)
2280202C	1/8-27	.50
2280404C	1/4-18	.74

MATERIAL: EXTRUDED BRASS ALLOY UNS C360000

This drawing is owned by Dixon Valve & Coupling Co. and shall be returned upon demand. It is loaned on condition that it shall not be copied or reproduced or submitted to others without the owners consent. In accepting it, subject to this condition, the recipient further agrees that this drawing or any design detail or concept disclosed herein shall not be used in any way detrimental to or in competition with the owner. If the recipient does not agree to the terms of this agreement they shall return this drawing immediately. The information contained in this drawing is subject to change without notice.



Dixon Brass
Westmont, Illinois USA

DRAWN P. MONAGHAN	DATE 6/10/20
APPROVED	DATE
ECO NO.	

TITLE: NPTF FEMALE PIPE CROSS		DO NOT SCALE THIS DRAWING	
SIZE A	DWG. NO. 228 SERIES	REV A	