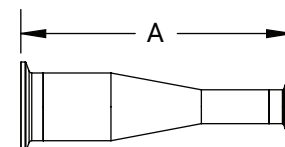


High Purity BioPharm Fittings

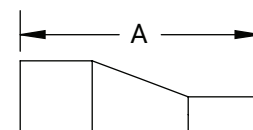
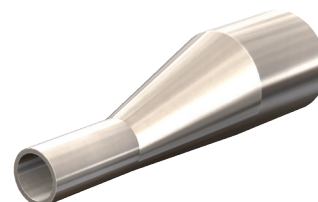
Clamp x Clamp Concentric Reducers - T3114MP

Tube O.D.	A (in)	2007 BPE	2012 BPE	PL Finish - SF1	PM Finish - SF4
3/4" x 1/2"	2.000		x	T3114MP075050PL	T3114MP075050PM
1" x 1/2"	2.500		x	T3114MP100050PL	T3114MP100050PM
1" x 3/4"	2.000		x	T3114MP100075PL	T3114MP100075PM
1-1/2" x 1/2"	3.500	x		T3114MP150050PL	T3114MP150050PM
1-1/2" x 3/4"	3.000		x	T3114MP150075PL	T3114MP150075PM
1-1/2" x 1"	3.000		x	T3114MP150100PL	T3114MP150100PM
2" x 1/2"	5.500	x		T3114MP200050PL	T3114MP200050PM
2" x 3/4"	5.000	x		T3114MP200075PL	T3114MP200075PM
2" x 1"	5.000		x	T3114MP200100PL	T3114MP200100PM
2" x 1-1/2"	3.000		x	T3114MP200150PL	T3114MP200150PM
2-1/2" x 1/2"	7.500	x		T3114MP250050PL	T3114MP250050PM
2-1/2" x 3/4"	7.000	x		T3114MP250075PL	T3114MP250075PM
2-1/2" x 1"	7.000	x		T3114MP250100PL	T3114MP250100PM
2-1/2" x 1-1/2"	5.000		x	T3114MP250150PL	T3114MP250150PM
2-1/2" x 2"	3.000		x	T3114MP250200PL	T3114MP250200PM
3" x 1"	9.000	x		T3114MP300100PL	T3114MP300100PM
3" x 1-1/2"	7.000		x	T3114MP300150PL	T3114MP300150PM
3" x 2"	5.000		x	T3114MP300200PL	T3114MP300200PM
3" x 2-1/2"	3.000		x	T3114MP300250PL	T3114MP300250PM
4" x 1"	13.125	x		T3114MP400100PL	T3114MP400100PM
4" x 1-1/2"	11.125	x		T3114MP400150PL	T3114MP400150PM
4" x 2"	9.125		x	T3114MP400200PL	T3114MP400200PM
4" x 2-1/2"	7.125		x	T3114MP400250PL	T3114MP400250PM
4" x 3"	5.125		x	T3114MP400300PL	T3114MP400300PM
6" x 3"	7.500		x	T3114MP600300PL	T3114MP600300PM
6" x 4"	7.625		x	T3114MP600400PL	T3114MP600400PM



Weld x Weld Eccentric Reducers - T32W

Tube O.D.	A (in)	Nominal Wall (in)	2007 BPE	2012 BPE	PL Finish - SF1	PM Finish - SF4
3/4" x 1/2"	4.000	0.065 x 0.065		x	T32W-075050PL	T32W-075050PM
1" x 1/2"	4.500	0.065 x 0.065		x	T32W-100050PL	T32W-100050PM
1" x 3/4"	4.000	0.065 x 0.065		x	T32W-100075PL	T32W-100075PM
1-1/2" x 1/2"	5.500	0.065 x 0.065	x		T32W-150050PL	T32W-150050PM
1-1/2" x 3/4"	5.000	0.065 x 0.065		x	T32W-150075PL	T32W-150075PM
1-1/2" x 1"	5.000	0.065 x 0.065		x	T32W-150100PL	T32W-150100PM
2" x 1/2"	7.750	0.065 x 0.065	x		T32W-200050PL	T32W-200050PM
2" x 3/4"	7.250	0.065 x 0.065	x		T32W-200075PL	T32W-200075PM
2" x 1"	7.250	0.065 x 0.065		x	T32W-200100PL	T32W-200100PM
2" x 1-1/2"	5.250	0.065 x 0.065		x	T32W-200150PL	T32W-200150PM
2-1/2" x 1/2"	9.750	0.065 x 0.065	x		T32W-250050PL	T32W-250050PM
2-1/2" x 3/4"	9.250	0.065 x 0.065	x		T32W-250075PL	T32W-250075PM
2-1/2" x 1"	9.250	0.065 x 0.065	x		T32W-250100PL	T32W-250100PM
2-1/2" x 1-1/2"	7.250	0.065 x 0.065		x	T32W-250150PL	T32W-250150PM
2-1/2" x 2"	5.500	0.065 x 0.065		x	T32W-250200PL	T32W-250200PM
3" x 1"	11.250	0.065 x 0.065	x		T32W-300100PL	T32W-300100PM
3" x 1-1/2"	9.250	0.065 x 0.065		x	T32W-300150PL	T32W-300150PM
3" x 2"	7.500	0.065 x 0.065		x	T32W-300200PL	T32W-300200PM
3" x 2-1/2"	5.500	0.065 x 0.065		x	T32W-300250PL	T32W-300250PM
4" x 1"	15.500	0.083 x 0.065	x		T32W-400100PL	T32W-400100PM
4" x 1-1/2"	13.500	0.083 x 0.065	x		T32W-400150PL	T32W-400150PM
4" x 2"	11.750	0.083 x 0.065		x	T32W-400200PL	T32W-400200PM
4" x 2-1/2"	9.750	0.083 x 0.065		x	T32W-400250PL	T32W-400250PM
4" x 3"	7.750	0.083 x 0.065		x	T32W-400300PL	T32W-400300PM
6" x 3"	9.750	0.109 x 0.065		x	T32W-600300PL	T32W-600300PM
6" x 4"	10.000	0.109 x 0.083		x	T32W-600400PL	T32W-600400PM



NOTE: BPE 2007 or 2012 Specifications as indicated

PL Finish – SF1

PM Finish – SF4

O.D. = 32Ra Mechanically Polished

O.D. = 32Ra Mechanically Polished

I.D. = 20Ra Mechanically Polished

I.D. = 15Ra Mechanically Polished and Electropolished